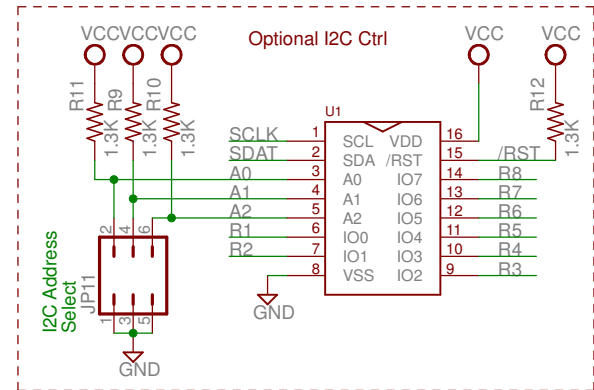
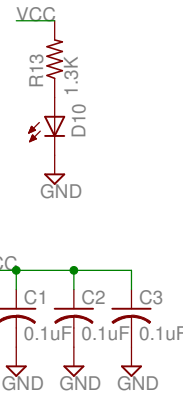
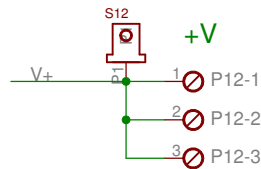
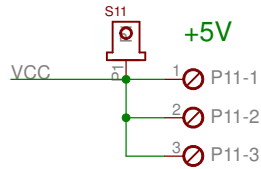
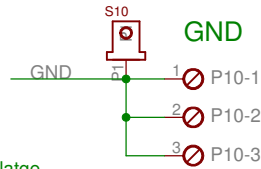
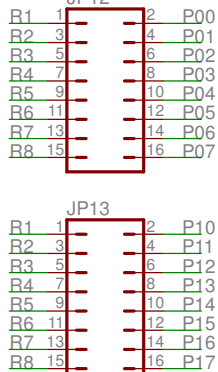
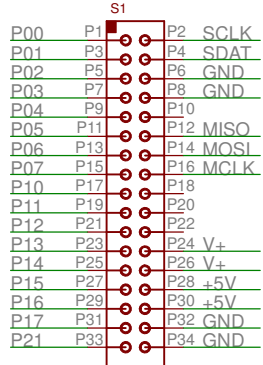


Common Voltage Selector
Used to set the common relay volatge
See jumpers JP1-8

+5V Power Select
Select Ext or USB power.

GPIO SELECT
Leave open for I2C



Delcom 8 Out Relay Module

TITLE: MODRELAYSTD

Document Number: MODRELAYSTD

REV:
B

Date: 10/10/2013 5:26:50 PM

Sheet: 1/1

05/20/2009 Rev0 - Initial Release
11/04/2010 RevA - Changed P1-P8
10/10/2013 RevB - Changed C5 to SMCA 4.7uF